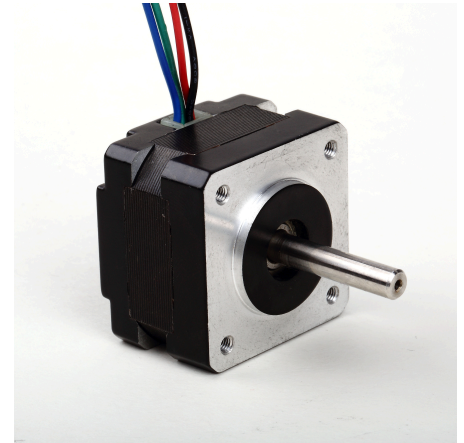




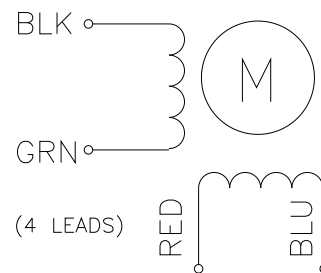
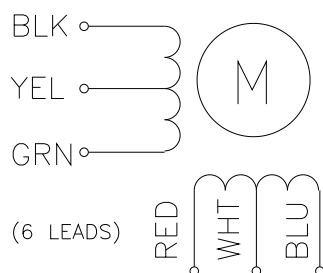
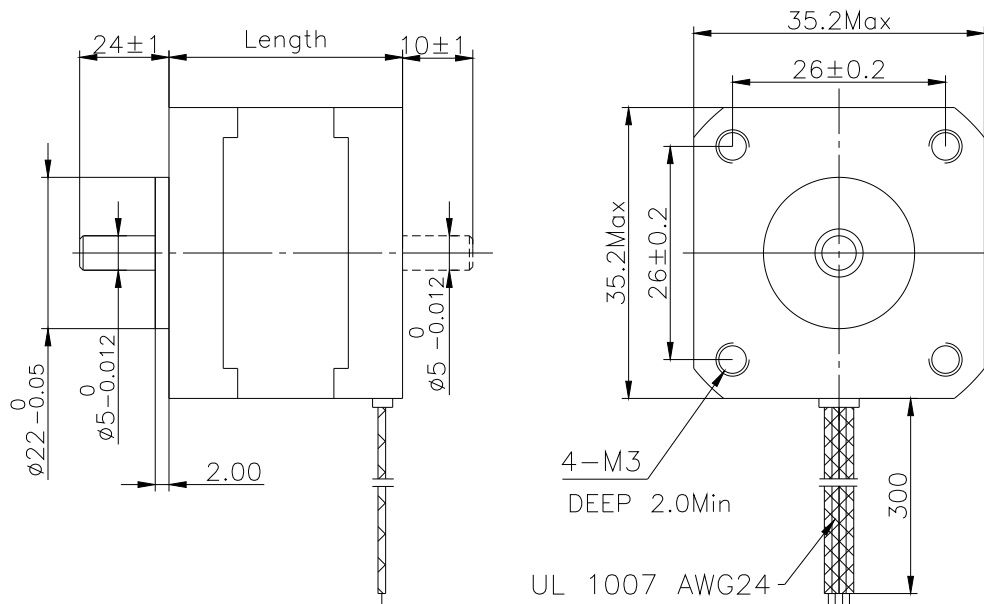
| | |
|-----------------------|----------------------------------|
| Step Angle | 1.8° (+/-5%@ full step, no load) |
| Resistance Accuracy | +/-10% |
| Inductance Accuracy | +/-20% |
| Temperature Rise | 80DegreeC MAX. |
| Ambient Temperature | -20 ~ +50 DegreeC |
| Shaft Radial Play | 0.02MAX @ 450g-load |
| Shaft Axial Play | 0.08MAX @ 450g-load |
| MAX Radial Force | 28N @ 20mm from the flange |
| MAX Axial Force | 10N |
| Dielectric Strength | 500VAC for one minute |
| Insulation Resistance | MIN 100Mohms, 500VDC |

35 mm Series (NEMA 14 size)



| Model | | Rated Voltage | Current /Phase | Resistance /Phase | Inductance /Phase | Holding Torque | Leads Number | Rotor Inertia | Approx. Weight | Detent Torque | Body Length |
|--------------|--------------|---------------|----------------|-------------------|-------------------|----------------|--------------|-------------------|----------------|---------------|-------------|
| Single Shaft | Double Shaft | | | | | | | | | | |
| LDO-35ST*** | | V | A | ohms | mH | g.cm | | g.cm ² | Kg | g.cm | mm |
| ***26-0284A | ***26-0284B | 7.4 | 0.28 | 26 | 27 | 700 | 4 | 10 | 0.13 | 60 | 26 |
| ***28-0504A | ***28-0504B | 10 | 0.5 | 20 | 14 | 1000 | 4 | 11 | 0.14 | 80 | 28 |
| ***36-1004A | ***36-1004B | 2.7 | 1.0 | 27 | 4.3 | 1400 | 4 | 14 | 0.18 | 100 | 36 |

(Model format: LDO-35ST36-1004A)



Note: NEMA8,11,14,15,17,23,34,43 size are available for stepper motors, and 0.9Degree Stepper is also available.